

**CASCADE**

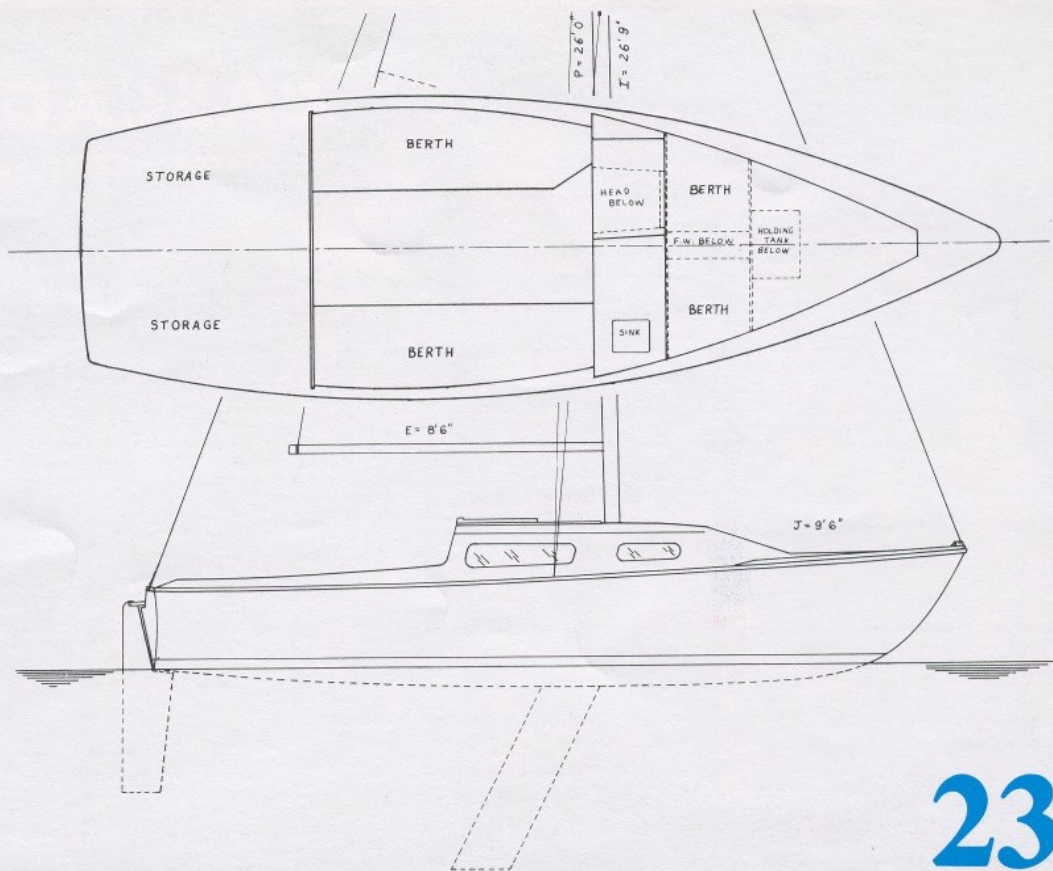
YACHT CONSTRUCTORS, INC.





LOA	22' 11"
LWL	20' 01"
BEAM	7' 08"
DRAFT	1' 8"
(Board Down)	5' 10"
SAIL AREA	237 sq. ft.
BALLAST	700 lb.
DISPLACEMENT	2,500 lb.

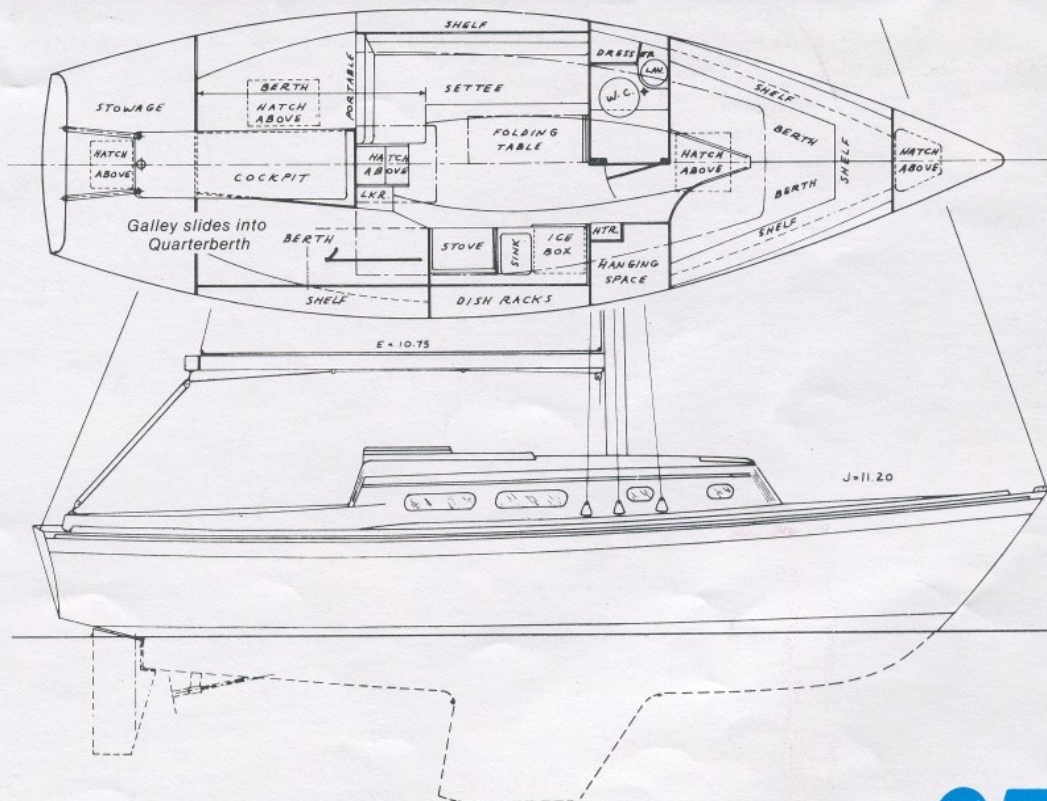
The Cascade 23 is the newest in our line of quality sailboats. Using a planing hull, dagger board, and a fractional rig you have a boat that is very fast and responsive, and you can trailer it to your favorite sailing area. Inside accommodations consist of a vee-berth forward with settees both port and starboard, a galley area complete with sink, head compartment, and a built in ice box.



# 23

LOA	27' 1/2"
LWL	21' 6"
BEAM	8' 10"
DRAFT	4' 6"
SAIL AREA	350.6 sq. ft.
BALLAST	2,275 lb.
DISPLACEMENT	6,000 lb.

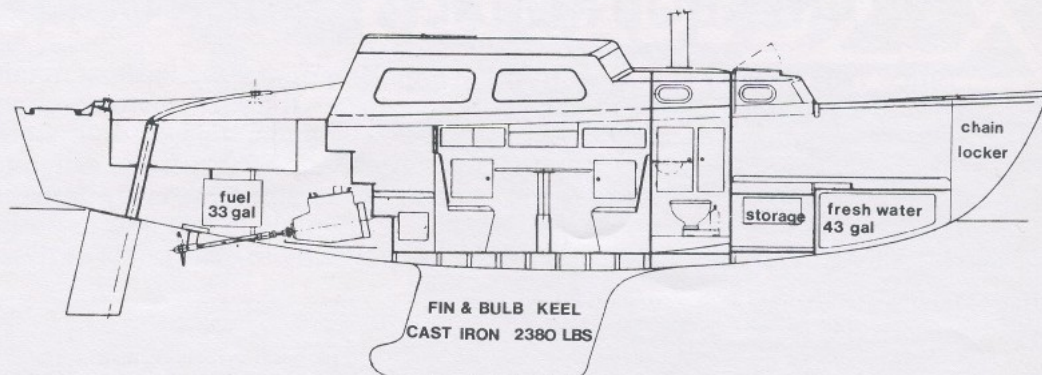
The Cascade 27 is a moderate displacement, fast cruiser/racer with a fin keel and spade rudder with a small skeg. Power is supplied by a Farymann diesel or outboard engine. Interior accommodations are a forward cabin with vee-berth, head with optional sink/vanity & hanging locker opposite. The main cabin includes both port and starboard settees and quarterberths (plus optional galley that slides back into starboard quarterberth). A fold down table serves port settee, or both port and starboard when galley is retracted; table folds up against forward bulkhead. In the cruiser, space is allowed for a diesel or kerosene heater in the main cabin.



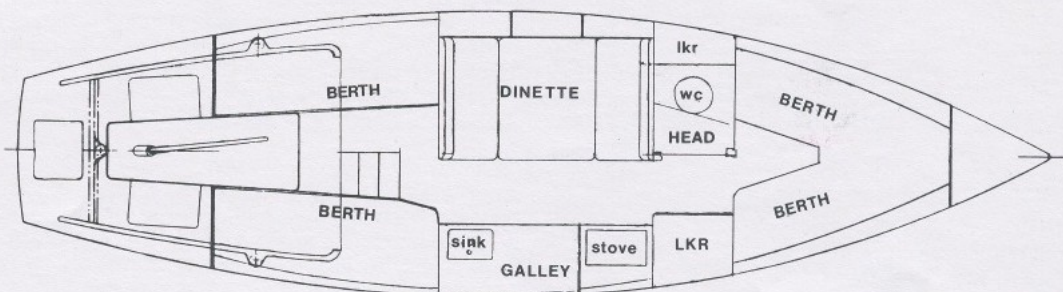
# 27



LOA	29' 0"
LWL	24' 0"
BEAM	8' 2"
DRAFT	4' 9"
SAIL AREA	405 sq. ft.
BALLAST	2,375 lb.
DISPLACEMENT	8,000 lb.



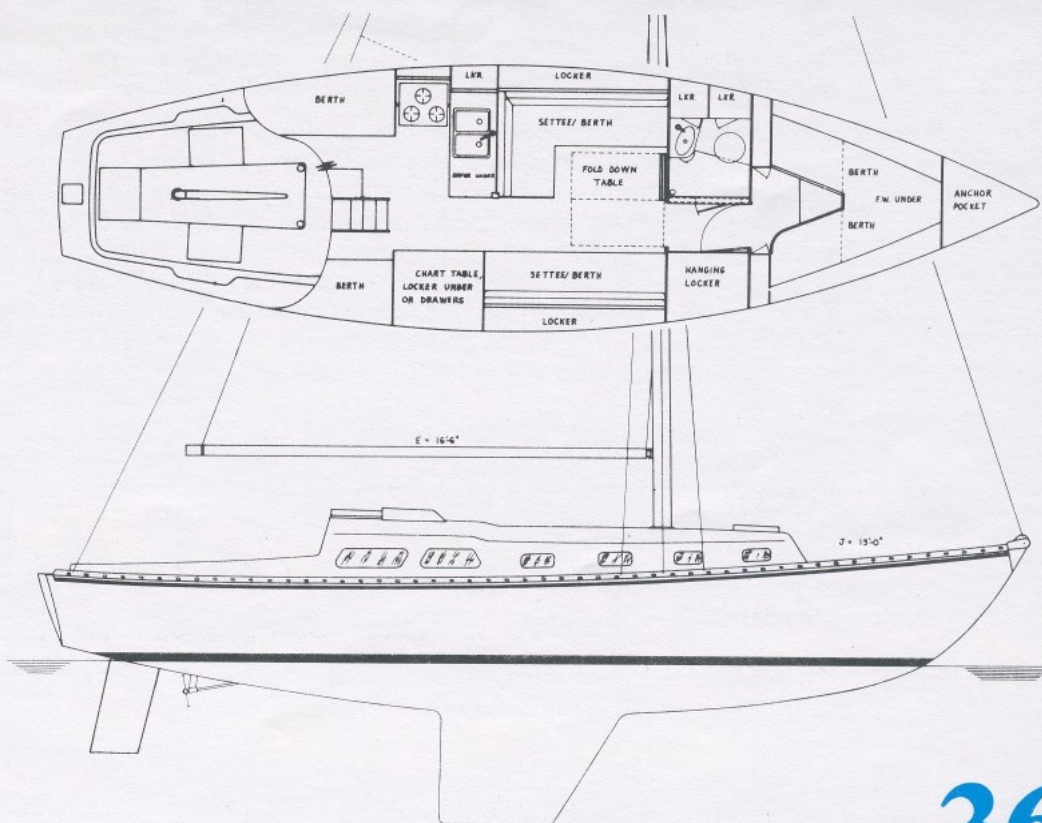
The Cascade 29 is fast, roomy, easy handling and trailerable. There is plenty of room for a family of 4-6, a large galley, storage space to spare, 6'1" headroom in the main cabin, and a fully enclosed head. Using a fin/bulb keel and mast head rig the 29 is responsive to the slightest touch, yet stiff enough to stand up in a heavy wind.



# 29

LOA	36' 0"
LWL	29' 0"
BEAM	10' 0"
DRAFT	5' 6"
SAIL AREA	590 sq. ft.
BALLAST	4,618 lb.
DISPLACEMENT	13,000 lb.

The Cascade 36 is designed to win more racing; yet it has more than average space for a boat this size for real comfort on extended cruises. Inside accommodations include a vee-berth forward with hanging lockers, fully enclosed head and shower, spacious galley, chart table, dinette, and one or two quarterberths depending on the arrangement you choose. Many of our 36 owners are off cruising the Pacific and enjoying every minute.



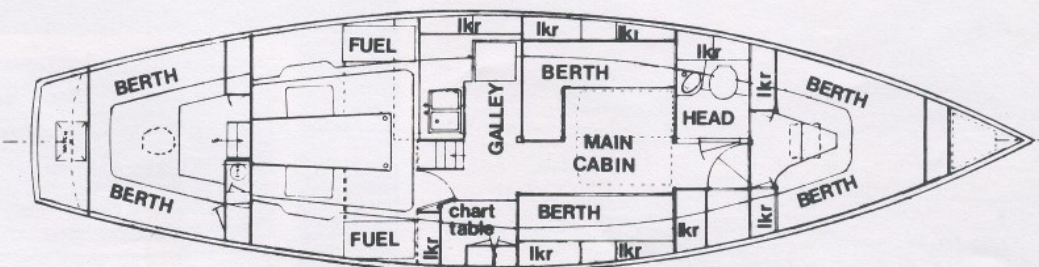
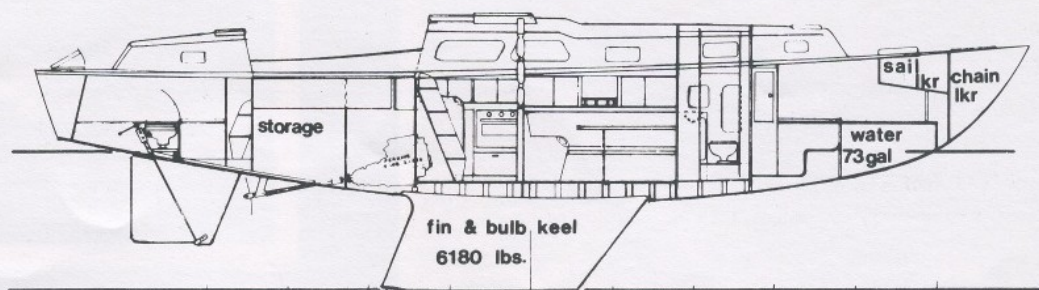
# 36



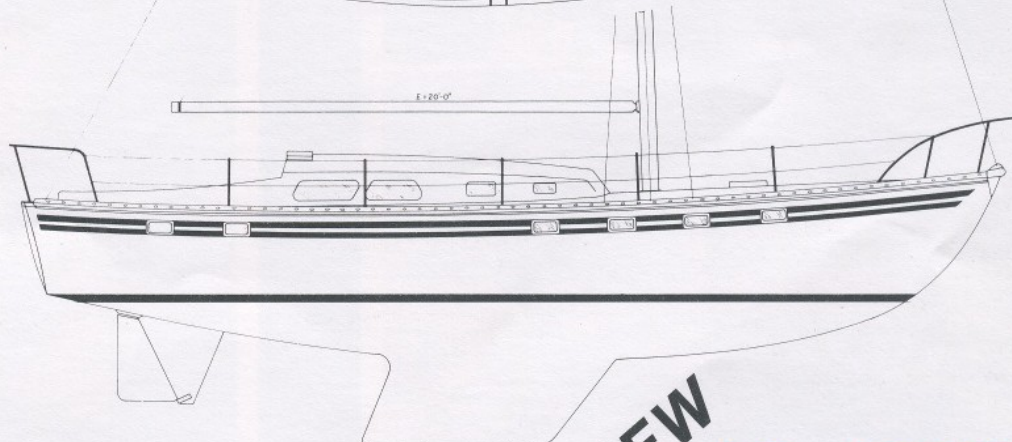
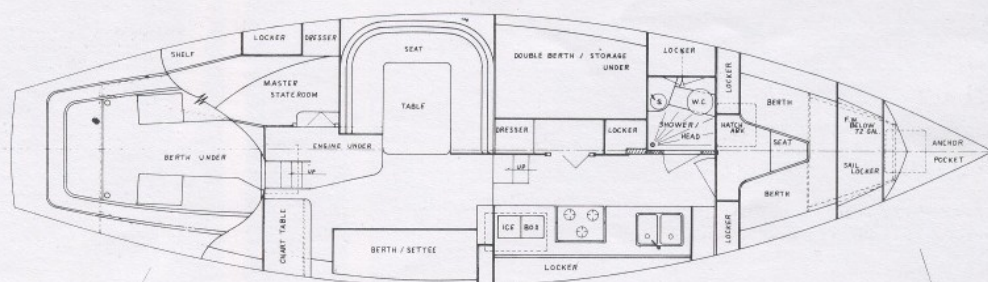
LOA	41' 9"
LWL	34' 0"
BEAM	11' 8"
DRAFT	6' 0"
SAIL AREA	800 sq. ft.
BALLAST	6,180 lb.
DISPLACEMENT	18,450 lb.

The Cascade 42 is offered with the standard hull with three different deck designs, and with a raised hull design for those who wish the ultimate in cruising and live aboard comfort. The 42 has had an excellent ocean racing record and has had many miles of extensive ocean cruising. The hull is built to take the roughest ocean, yet will still get you where you are going quickly in light winds. Powered by a 40 h.p. engine it has a cruising range of over 750 miles under power. Under sail your cruising range is as far as your own limitations. Many of our families have spent up to five years living on board their 42 Cascade and seeing all the islands of their dreams.

LOA	42' 6"
LWL	34' 0"
BEAM	12' 0"
DRAFT	6' 0"
SAIL AREA	800 sq. ft.
BALLAST	6,180 lb.
DISPLACEMENT	19,000 lb.

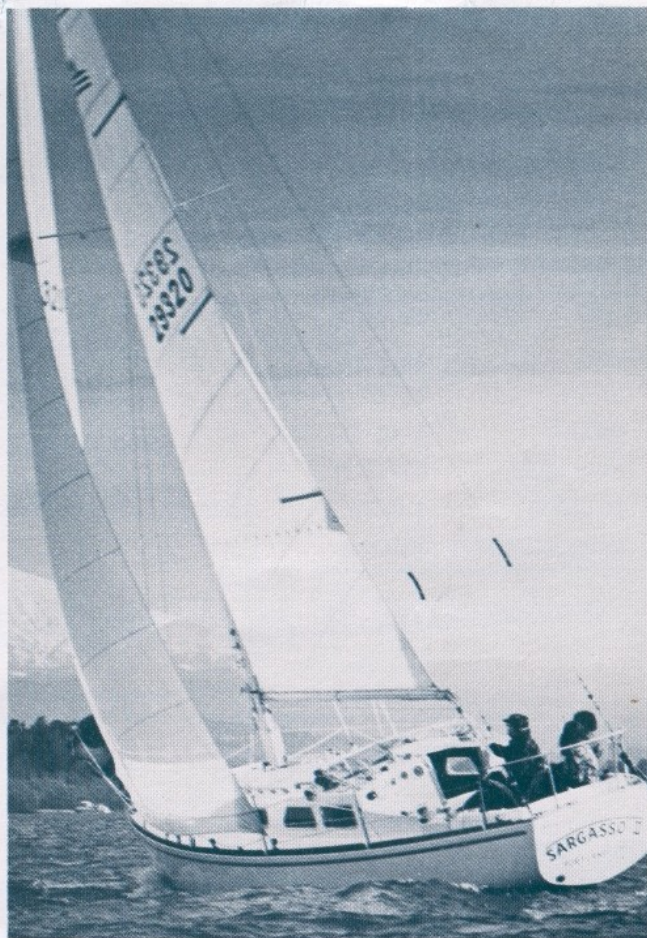
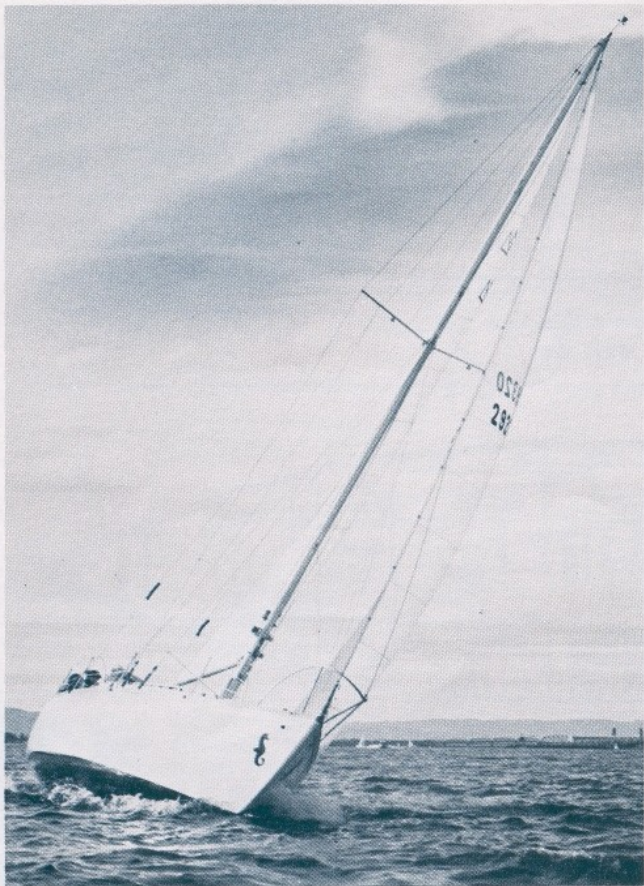


42



NEW  
42 HS







## A WORD ABOUT QUALITY & OUR COMPANY . . .

Since 1954, when Yacht Constructors began as one of the earliest manufacturers of large fiberglass sailboat hulls, we have continued to use the hand lay-up procedures responsible for the high quality Cascade Yachts of today. The hulls, tops, floor timbers and bulkheads are carefully laid up step-by-step to insure maximum strength and efficiency. Joints fit perfectly and seams are smooth because workmanship means craftsmanship to us. And while we honor our traditional methods, we continuously test new materials, incorporating them if they meet our quality standards. We never try to save costs at the expense of quality.

Cascade cruisers or racers can always be identified by our hand lay-up method of construction in the hull. We use woven roving and cloths, lay each piece in and wet it out with resin, then hand squeegee excess resin to keep the content low. Our resin content in the finished hull is approximately 50%, as compared to nearly 70% resin found in many of the hulls made today with mat (chopped fibers) and chopper guns. The use of mat and chopper guns, while greatly reducing construction costs, have not improved the quality of hulls. Compared with fiberglass, these methods use a large amount of resin which adds weight and bulk and makes the laminate more brittle.

The time and attention used in laying up a hull is also important because as the fiberglass and resin harden, heat is produced. If too much material is put into the hull at once, the heat generated can cause warping and weak spots in the hull. Cascade hulls are laid up two layers at a time, allowing sufficient time between layers for proper curing . . . and after each layer, all seams are scraped smooth to avoid air bubbles between layers that can cause delaminations. Our methods result in a thinner hull section that's much stronger than the thicker hull of chopped fibers.

Tops are hand-laid and squeegeed in the same way our hulls are . . . then we go one step further. The visible interior (cabin sides, backs and fronts and under the decks) is panelled with 1/2" marine mahogany plywood.\* Non-visible areas are panelled with 1/2" fir to keep the price lower for you, yet provide the strength we insist upon. You'll see in any Cascade that joiner work is of highest quality; you'll never need to re-work it for smoothness or beauty. This construction and care adds up to a very strong deck and cabin that will never feel "spongy" when walked upon.

Floor timbers are glassed heavily to the hull and relieved just enough to allow the glass build-up to reach the top of the timbers so the floor will fit down smoothly. Bulkheads are glassed to the hull using six layers of 10-ounce fiberglass cloth tape on each side.

*\* Exception is the Cascade 23*

From this point, you have the option to have us finish your Cascade to your specifications or to finish it yourself. We do finish it with painstaking care and take pride in every fitting and furnishing; however, completing it yourself affords you the luxury of a highest quality hull *plus* being able to set your own timetable and budget by completing it in stages. (You'll finish your boat for approximately 50% of the price you would pay us to do it for you . . . ) Aside from the savings and convenience, you'll also learn the self-satisfaction of individualizing your Cascade and feel a special appreciation for how she's built just for your pleasure. We take pride in the personal service and knowledge we offer to Cascade owners because of our 25 years' experience, and we're happy to advise and assist whenever needed.

If you've been dreaming of a continental cruise or just a summer home that won't tie you down, you can make your dream come true! You're free to move, meet new friends, and see new places by simply pulling up anchor and sails . . . whether it's around the corner or around the world!

Come see how we build our Cascade Yachts and talk with us. You'll visualize a dream by seeing the many options and features we can offer you in your cruiser or racer!

**TERMS:** 25% deposit required with each order & prices are subject to change prior to receipt of an order. Prices F.O.B. manufacturer.